

Plotted By: Lanier, Morgan - Sheet: Silt-Fence - Layout: C3.1 - March 08, 2019 - 02:29:11pm - K:\VLD\_Civil\087800501 - Triad Gosling Retail\DWG\PlanSheets\C-Eros-Detail.dwg  
 This document, together with the concepts and designs presented herein, is intended only for the specific purpose and client for which it was prepared. Reuse of and improper reliance on this document without written authorization and adaptation by Kimley-Horn and Associates, Inc. shall be without liability to Kimley-Horn and Associates, Inc.

EROSION CONTROL SCHEDULING AND SEQUENCING	
I. ROUGH GRADING	CONSTRUCTION ENTRANCE/EXIT AND SILT FENCE PROTECTION SHALL BE INSTALLED PRIOR TO THE INITIATION OF ROUGH GRADING, AS NEEDED.
II. UTILITY INSTALLATION	ALL PRIOR EROSION CONTROL MEASURES INSTALLED ABOVE TO BE MAINTAINED AS NECESSARY DURING UTILITY INSTALLATION. INLET PROTECTION SHALL BE INSTALLED AS STORM DRAINAGE SYSTEM IS CONSTRUCTED
III. PAVING	ALL PRIOR EROSION CONTROL MEASURES INSTALLED ABOVE TO BE MAINTAINED AS NECESSARY DURING PAVING AND THROUGHOUT THE REMAINDER OF THE PROJECT.
IV. FINAL GRADING/SOIL STABILIZATION/LANDSCAPING	REFERENCE LANDSCAPE PLANS FOR FINAL STABILIZATION OF SITE. ALL TEMPORARY EROSION CONTROL MEASURES TO BE REMOVED AT THE CONCLUSION OF THE PROJECT ONCE FINAL STABILIZATION HAS BEEN ACHIEVED.

1. EROSION CONTROL DEVICES AS SHOWN ON THE EROSION CONTROL PLAN FOR THE PROJECT SHALL BE INSTALLED PRIOR TO THE START OF LAND DISTURBING ACTIVITIES ON THE PROJECT.
2. ALL EROSION CONTROL DEVICES ARE TO BE INSTALLED IN ACCORDANCE WITH THE APPROVED PLANS AND SPECIFICATIONS FOR THE PROJECT. CHANGES ARE TO BE APPROVED BEFORE CONSTRUCTION BY THE DESIGN ENGINEER AND HARRIS COUNTY ENGINEERING DIVISION.
3. IF THE EROSION CONTROL PLAN AS APPROVED CANNOT CONTROL EROSION AND OFF-SITE SEDIMENTATION FROM THE PROJECT THE EROSION CONTROL PLAN WILL BE REQUIRED TO BE REVISED AND/OR ADDITIONAL EROSION CONTROL DEVICES WILL BE REQUIRED ON SITE.
4. IF OFF-SITE BORROW OR SPOILS SITES ARE USED IN CONJUNCTION WITH THIS PROJECT, THIS INFORMATION SHALL BE DISCLOSED AND SHOWN ON THE EROSION CONTROL PLAN. OFF-SITE BORROW AND SPOILS AREAS ARE CONSIDERED PART OF EROSION CONTROL REQUIREMENTS. THESE AREAS SHALL BE STABILIZED WITH GROUND COVER PRIOR TO FINAL APPROVAL OF THE PROJECT.
5. INSPECTIONS SHALL BE MADE WEEKLY AND AFTER RAIN STORM EVENTS TO INSURE THAT THE DEVICES ARE FUNCTIONING PROPERLY. WHEN SEDIMENT OR MUD HAS CLOGGED THE VOID SPACES BETWEEN STONES OR MUD IS BEING TRACKED ONTO A PUBLIC ROADWAY THE AGGREGATE PAD MUST BE WASHED DOWN OR REPLACED. RUNOFF FROM THE WASH DOWN OPERATION SHALL NOT BE ALLOWED TO DRAIN DIRECTLY OFF SITE WITHOUT FIRST FLOWING THROUGH ANOTHER MBP TO CONTROL OFF-SITE SEDIMENTATION. PERIODIC RE-GRADING OR THE ADDITION OF NEW STONE MAY BE REQUIRED TO MAINTAIN THE EFFICIENCY OF THE INSTALLATION.
6. CONTRACTOR SHALL HAVE A COPY THE SWPPP ON SITE AT ALL TIMES.
7. CONTRACTOR SHALL BE RESPONSIBLE FOR SUBMITTAL OF N.O.I., N.O.T. AND ANY ADDITIONAL INFORMATION REQUIRED BY THE E.P.A. CONTRACTOR SHALL COMPLY WITH ALL E.P.A. STORM WATER POLLUTION PREVENTION REQUIREMENTS.
8. AFTER FINAL STABILIZATION IS ACHIEVED, CONTRACTOR SHALL CLEAN ON-SITE STORM SEWER SYSTEM.
9. CONTRACTOR TO INDICATE LOCATIONS OF ALL FUEL DEPOTS, PORT-A-CANS, DUMPSTERS AND DRUMS FILLED WITH ANY CHEMICALS ON THE SWPPP PLAN.

**B.M.P. MAINTENANCE SCHEDULE**  
 TEMPORARY STONE CONSTRUCTION ENTRANCE/EXIT:

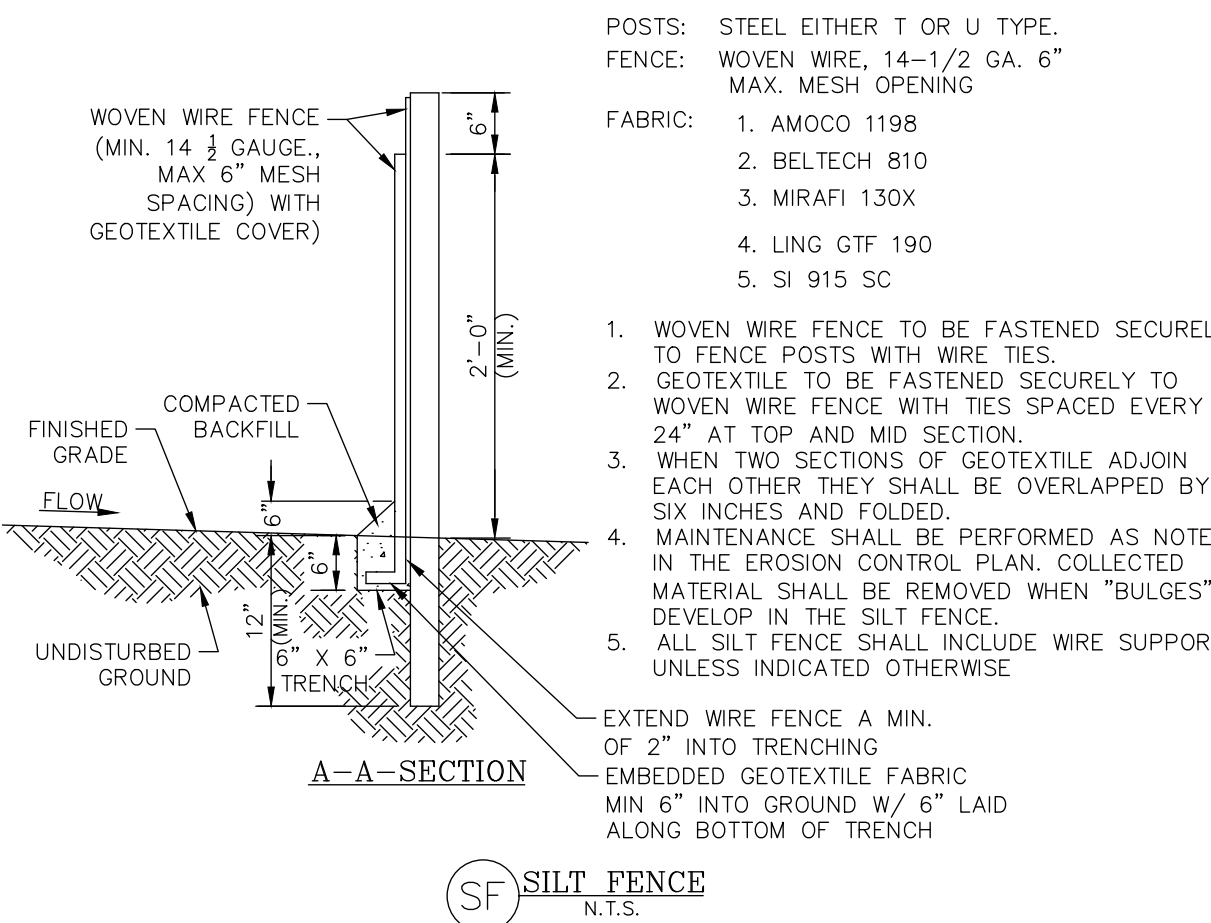
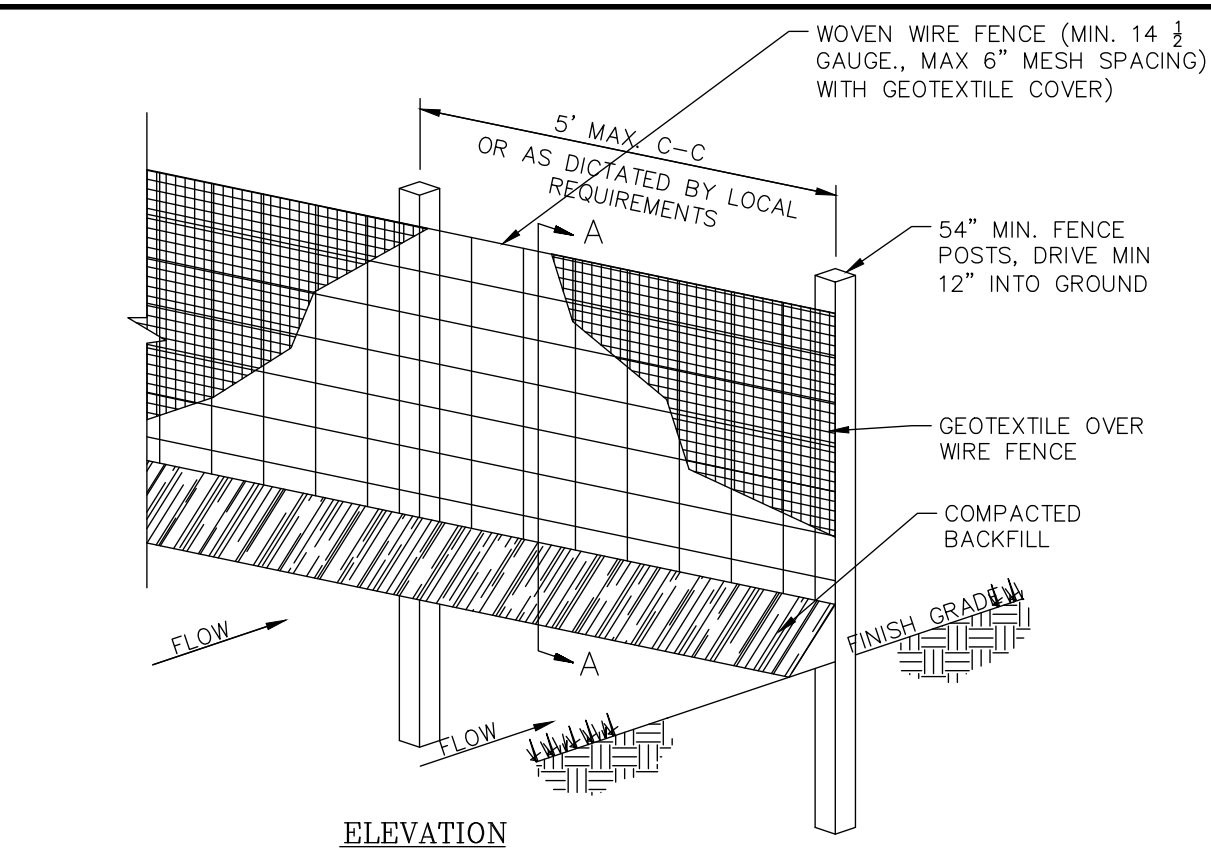
INSPECTIONS SHALL BE MADE WEEKLY AND AFTER RAIN STORM EVENTS TO ENSURE THAT THE FACILITY IS FUNCTIONING PROPERLY. AGGREGATE PAD SHALL BE WASHED DOWN OR REPLACED WHEN SEDIMENT OR MUD HAS CLOGGED THE VOID SPACES BETWEEN THE STONES OR MUD IS BEING TRACKED ONTO THE PUBLIC ROADWAY. RUNOFF FROM WASH DOWN OPERATION SHALL BE FILTERED THROUGH ANOTHER B.M.P. PRIOR TO DRAINING OFF-SITE.

SILT FENCE:

INSPECTIONS SHALL BE MADE WEEKLY AND AFTER RAIN STORM EVENTS. SEDIMENT SHALL BE REMOVED FROM BEHIND THE FENCE WHEN THE DEPTH OF SEDIMENT HAS BUILT UP TO ONE-THIRD THE HEIGHT OF THE FENCE ABOVE GRADE. FENCE SHALL BE INSPECTED FOR GAPS AT BASE. INSPECT SUPPORTING POSTS AND FILTER FABRIC. REPLACE IF REQUIRED.

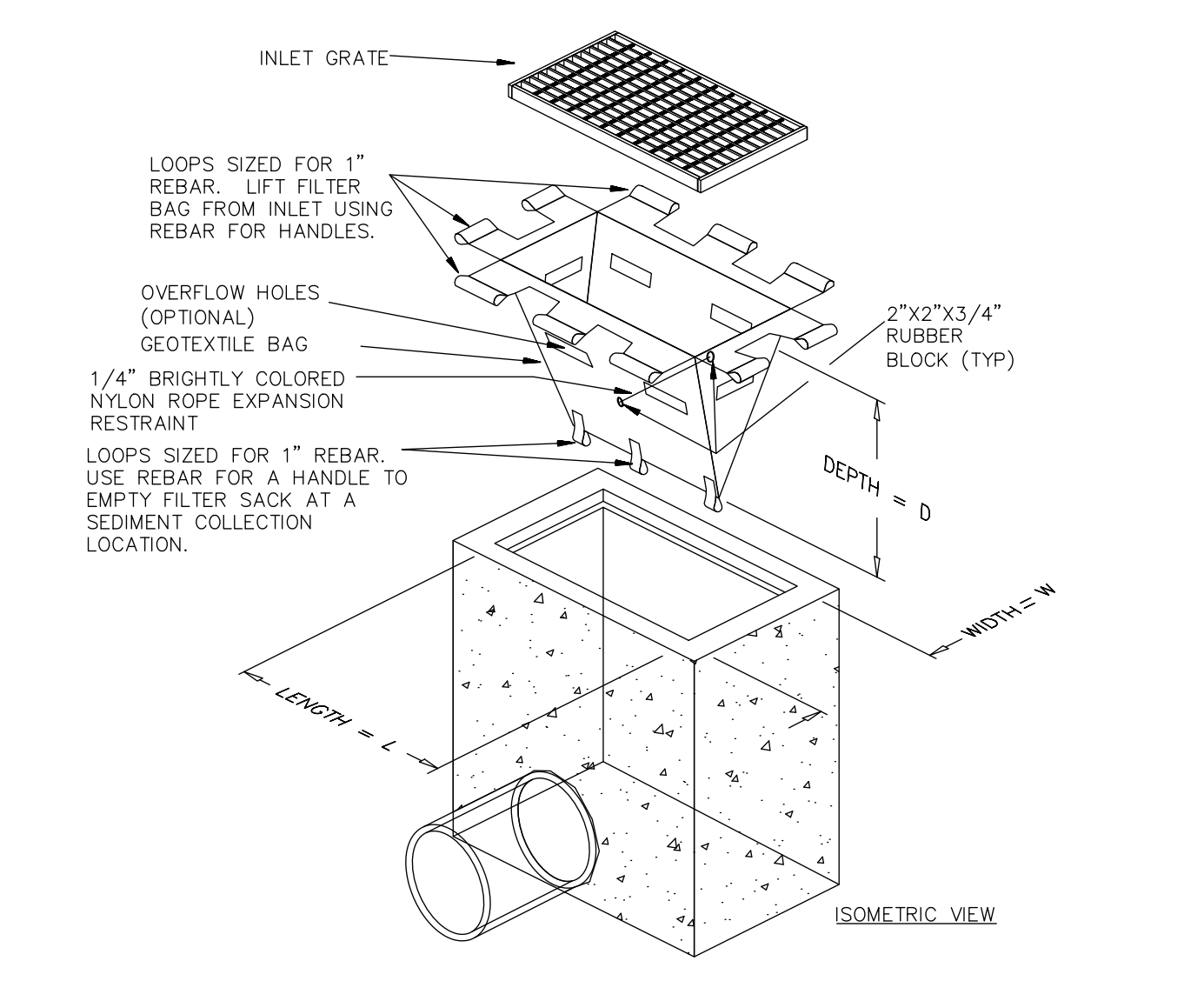
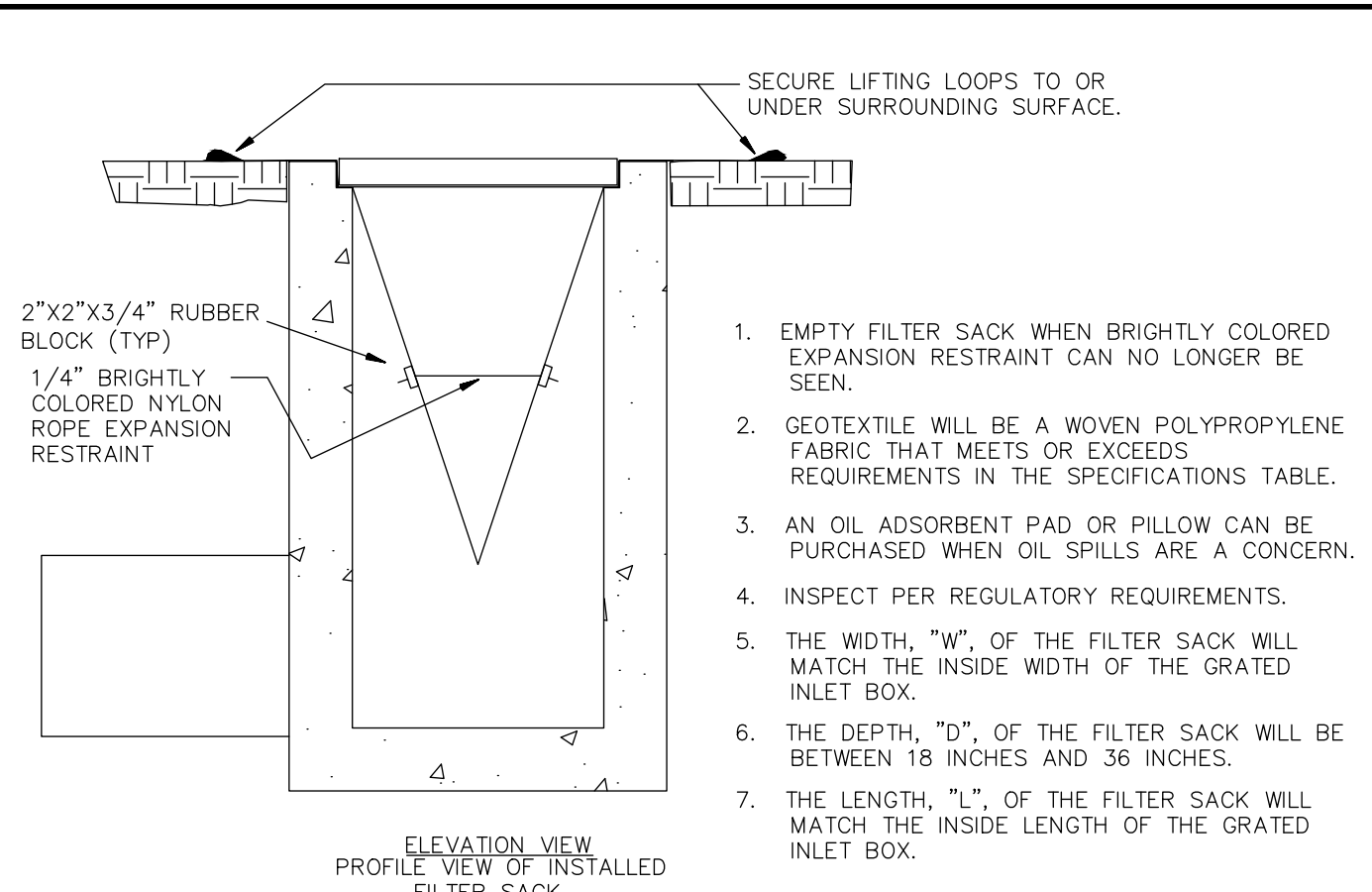
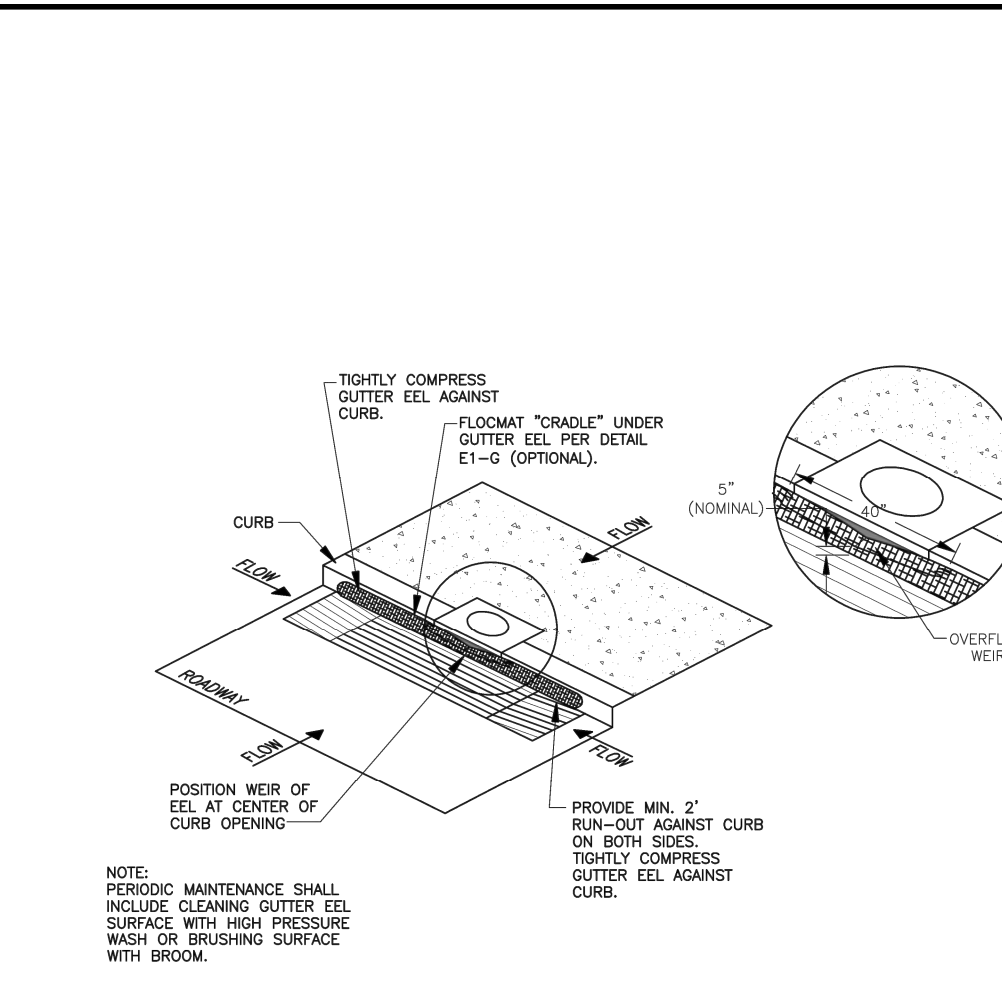
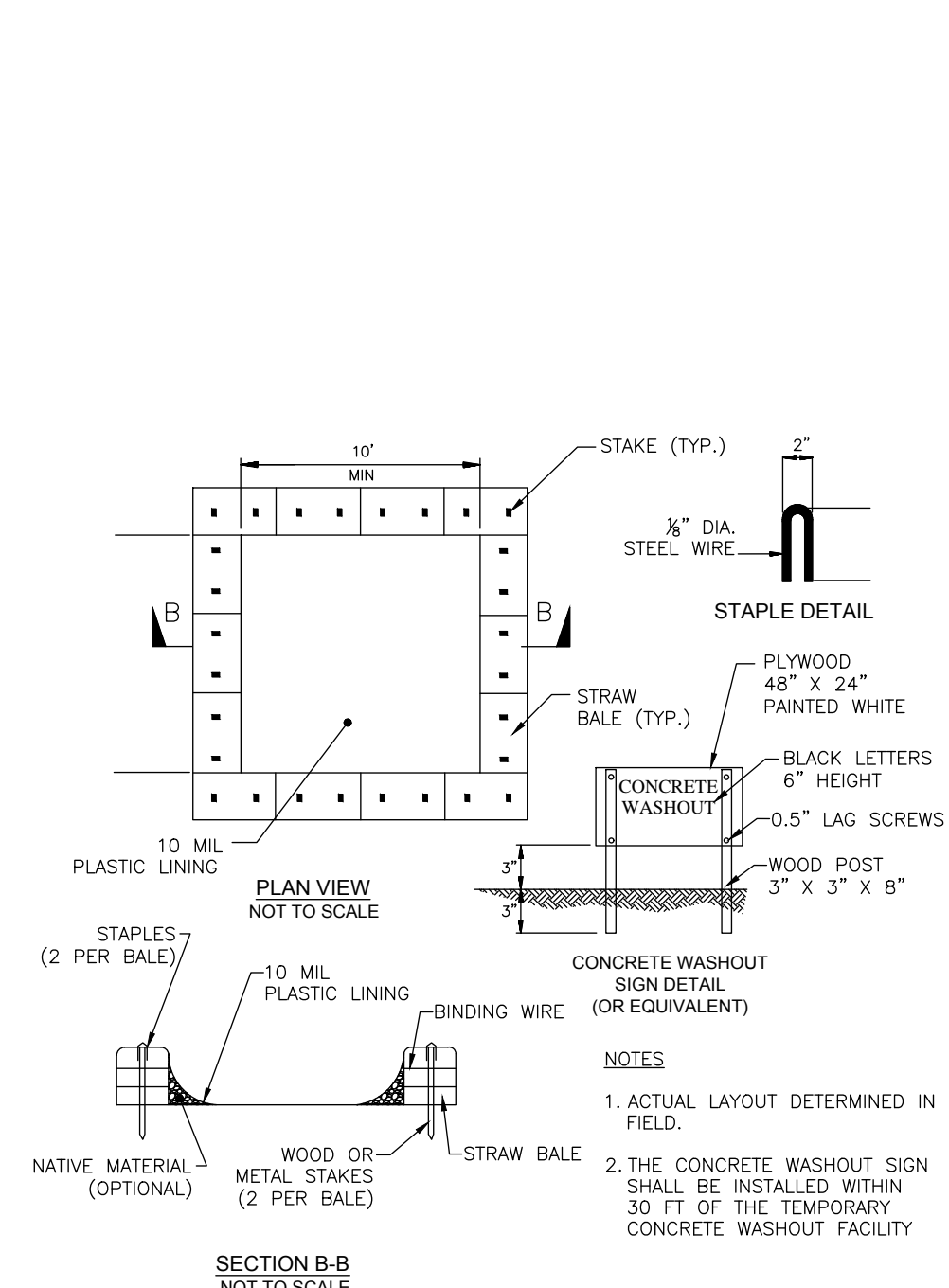
PIPE INLET PROTECTION:

INSPECTIONS SHALL BE MADE WEEKLY AND AFTER RAIN STORM EVENTS TO ENSURE THAT THE DEVICE IS FUNCTIONING PROPERLY. SEDIMENT SHALL BE REMOVED FROM THE STORAGE AREA WHEN SEDIMENT DEPTH HAS BUILT UP TO ONE-HALF THE DESIGN DEPTH. IF DE-WATERING OF THE STORAGE VOLUME IS NOT OCCURRING, CLEAN OR REPLACE THE FILTER STONE SURROUNDING THE PIPE INLET. CLEAN THE STONE SURFACE THE FIRST FEW TIMES BY RAKING. REPEATED SEDIMENT BUILD-UP WILL REQUIRE FILTER STONE REPLACEMENT.



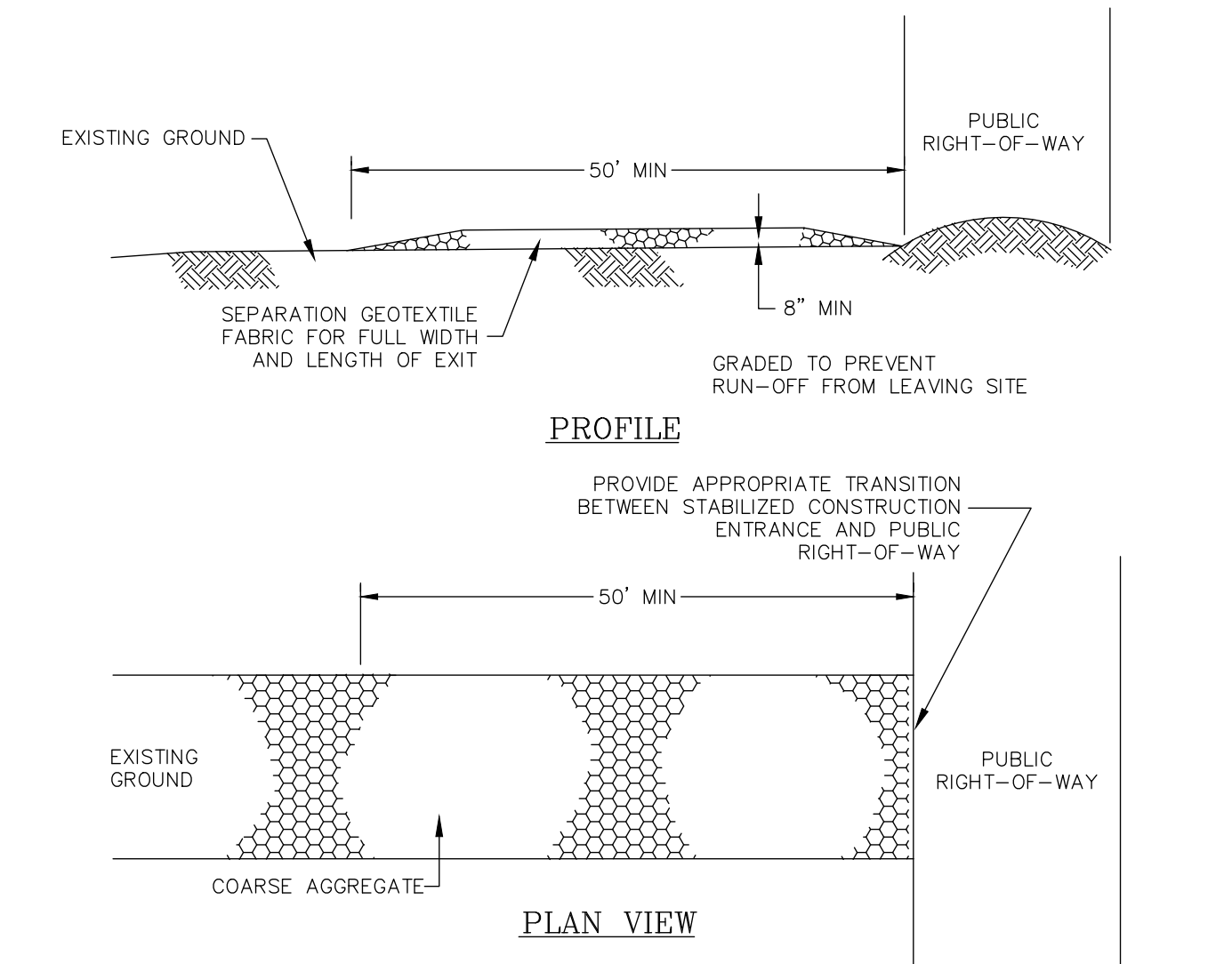
- POSTS: STEEL EITHER T OR U TYPE.  
 FENCE: WOVEN WIRE, 14-1/2 GA. 6" MAX. MESH OPENING
- FABRIC:
1. AMOCO 1198
  2. BELTECH 810
  3. MIRAFI 130X
  4. LING GTF 190
  5. SI 915 SC
1. WOVEN WIRE FENCE TO BE FASTENED SECURELY TO FENCE POSTS WITH WIRE TIES.
  2. GEOTEXTILE TO BE FASTENED SECURELY TO WOVEN WIRE FENCE WITH TIES SPACED EVERY 24" AT TOP AND MID SECTION.
  3. WHEN TWO SECTIONS OF GEOTEXTILE ADJOIN EACH OTHER THEY SHALL BE OVERLAPPED BY SIX INCHES AND FOLDED.
  4. MAINTENANCE SHALL BE PERFORMED AS NOTED IN THE EROSION CONTROL PLAN. COLLECTED MATERIAL SHALL BE REMOVED WHEN "BULGES" DEVELOP IN THE SILT FENCE.
  5. ALL SILT FENCE SHALL INCLUDE WIRE SUPPORT UNLESS INDICATED OTHERWISE

**IP10 CURB INLET SEDIMENT DEVICE**  
N.T.S.



**IP5 FILTER SACK INLET SEDIMENT DEVICE**  
N.T.S.

DO NOT USE ON ROADWAYS WHERE PONDING MAY CAUSE TRAFFIC HAZARDS.



- CONSTRUCTION NOTES:**
1. LENGTH SHALL BE AS SHOWN ON THE CONSTRUCTION DRAWINGS, BUT NOT LESS THAN 50 FEET.
  2. THICKNESS SHALL BE NOT LESS THAN 8 INCHES.
  3. WIDTH SHALL BE NOT LESS THAN FULL WIDTH OF ALL POINTS OF INGRESS OR EGRESS.
  4. STABILIZATION FOR OTHER AREAS SHALL HAVE THE SAME AGGREGATE THICKNESS AND WIDTH REQUIREMENTS AS THE STABILIZED CONSTRUCTION EXIT, UNLESS OTHERWISE SHOWN ON THE CONSTRUCTION DRAWINGS.
  5. STABILIZED AREA MAY BE WIDENED OR LENGTHENED TO ACCOMMODATE A TRUCK WASHING AREA. AN OUTLET SEDIMENT TRAP MUST BE PROVIDED FOR THE TRUCK WASHING AREA.
  6. SEE COH STANDARD SPECIFICATION FOR STABILIZED CONSTRUCTION EXIT.
  7. STABILIZED CONSTRUCTION EXIT SHALL BE MAINTAINED FREE OF SEDIMENT FOR THE DURATION OF THE PROJECT.
  8. AGGREGATE SHALL HAVE A MINIMUM DIAMETER OF 2".

**CE STABILIZED CONSTRUCTION ACCESS**  
N.T.S.

NO.	REVISIONS	DATE

**Kimley»Horn**

© 2017 KIMLEY-HORN AND ASSOCIATES, INC.  
 1400 WOODLICK FOREST DRIVE, SUITE 225  
 THE WOODS AT WILSONVILLE, OR 97146-3800  
 PHONE: 503.261.2416  
 FAX: 503.261.2418  
 WWW.KIMLEY-HORN.COM



RHA PROJECT	067800501
DATE	03/08/2019
SCALE	AS SHOWN
DESIGNED BY	SLH
DRAWN BY	MTL
CHECKED BY	SCF

**EROSION CONTROL DETAILS**

**TRIAD GOSLING RETAIL**  
HARRIS COUNTY