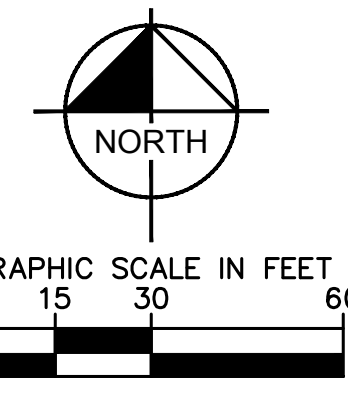
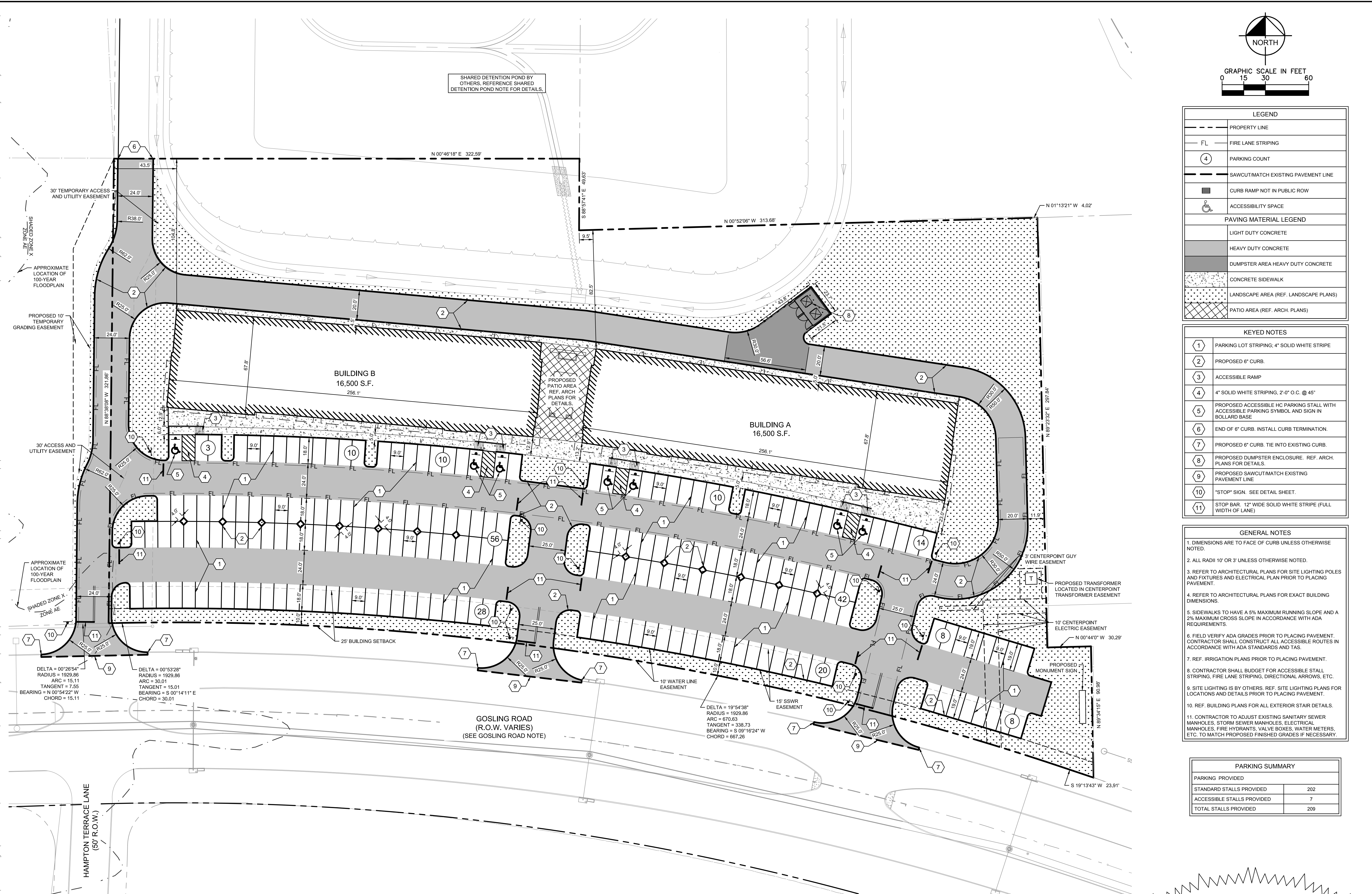


Plotted By: Lanier, Morgan, Sheet: Set: KHA - Layout: C3.0 - March 08, 2019 - 02:29:21pm - K:\VDC\Drawings\7500501 - Triad Gosling Retail\DWG\PlanSheets\C-Dim.dwg  
 This document, together with the concepts and designs presented herein, is intended only for the specific purpose and client for which it was prepared. Reuse of and improper reliance on this document without written authorization and adaptation by Kimley-Horn and Associates, Inc. shall be without liability to Kimley-Horn and Associates, Inc.



LEGEND	
---	PROPERTY LINE
FL	FIRE LANE STRIPING
④	PARKING COUNT
---	SAWCUT/MATCH EXISTING PAVEMENT LINE
---	CURB RAMP NOT IN PUBLIC ROW
♿	ACCESSIBILITY SPACE
PAVING MATERIAL LEGEND	
---	LIGHT DUTY CONCRETE
---	HEAVY DUTY CONCRETE
---	DUMPSTER AREA HEAVY DUTY CONCRETE
---	CONCRETE SIDEWALK
---	LANDSCAPE AREA (REF. LANDSCAPE PLANS)
---	PATIO AREA (REF. ARCH. PLANS)

KEYED NOTES	
①	PARKING LOT STRIPING, 4" SOLID WHITE STRIPE
②	PROPOSED 6" CURB.
③	ACCESSIBLE RAMP
④	4" SOLID WHITE STRIPING, 2'-0" O.C. @ 45°
⑤	PROPOSED ACCESSIBLE HC PARKING STALL WITH ACCESSIBLE PARKING SYMBOL AND SIGN IN BOLLARD BASE
⑥	END OF 6" CURB. INSTALL CURB TERMINATION.
⑦	PROPOSED 6" CURB. TIE INTO EXISTING CURB.
⑧	PROPOSED DUMPSTER ENCLOSURE. REF. ARCH. PLANS FOR DETAILS.
⑨	PROPOSED SAWCUT/MATCH EXISTING PAVEMENT LINE
⑩	*STOP* SIGN. SEE DETAIL SHEET.
⑪	STOP BAR. 12" WIDE SOLID WHITE STRIPE (FULL WIDTH OF LANE)

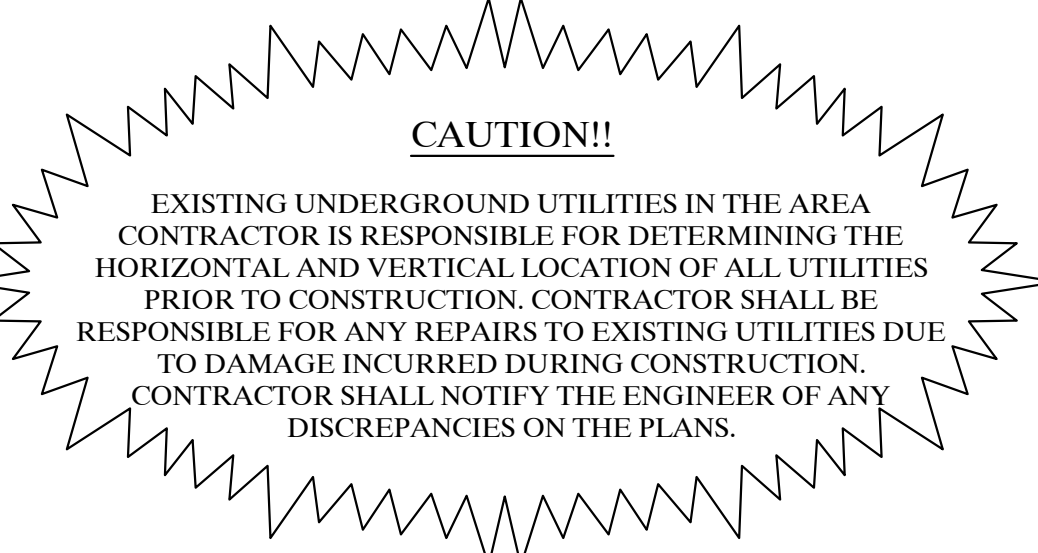
GENERAL NOTES	
1.	DIMENSIONS ARE TO FACE OF CURB UNLESS OTHERWISE NOTED.
2.	ALL RADII 10' OR 3' UNLESS OTHERWISE NOTED.
3.	REFER TO ARCHITECTURAL PLANS FOR SITE LIGHTING POLES AND FIXTURES AND ELECTRICAL PLAN PRIOR TO PLACING PAVEMENT.
4.	REFER TO ARCHITECTURAL PLANS FOR EXACT BUILDING DIMENSIONS.
5.	SIDEWALKS TO HAVE A 5% MAXIMUM RUNNING SLOPE AND A 2% MAXIMUM CROSS SLOPE IN ACCORDANCE WITH ADA REQUIREMENTS.
6.	FIELD VERIFY ADA GRADES PRIOR TO PLACING PAVEMENT. CONTRACTOR SHALL CONSTRUCT ALL ACCESSIBLE ROUTES IN ACCORDANCE WITH ADA STANDARDS AND TAS.
7.	REF. IRRIGATION PLANS PRIOR TO PLACING PAVEMENT.
8.	CONTRACTOR SHALL BUDGET FOR ACCESSIBLE STALL STRIPING, FIRE LANE STRIPING, DIRECTIONAL ARROWS, ETC.
9.	SITE LIGHTING IS BY OTHERS. REF. SITE LIGHTING PLANS FOR LOCATIONS AND DETAILS PRIOR TO PLACING PAVEMENT.
10.	REF. BUILDING PLANS FOR ALL EXTERIOR STAIR DETAILS.
11.	CONTRACTOR TO ADJUST EXISTING SANITARY SEWER MANHOLES, STORM SEWER MANHOLES, ELECTRICAL MANHOLES, FIRE HYDRANTS, VALVE BOXES, WATER METERS, ETC. TO MATCH PROPOSED FINISHED GRADES IF NECESSARY.

PARKING SUMMARY	
PARKING PROVIDED	
STANDARD STALLS PROVIDED	202
ACCESSIBLE STALLS PROVIDED	7
TOTAL STALLS PROVIDED	209

**PUBLIC UTILITIES NOTE:**  
 LOCATION OF EXISTING WATER AND SEWER LINES ADJACENT TO THIS SITE ARE SHOWN PER THE PRELIMINARY PLANS TITLED "PUBLIC WATER AND SANITARY SEWER EXTENSIONS TO SERVE TRIAD REAL ESTATE AND LANDMARK TRACT FOR NORTHHAMPTON MUNICIPAL UTILITY DISTRICT" BY JONES AND CARTER. AT THIS TIME, GOSLING ROAD IS BEING WIDENED AND THE PROPOSED RETAIL SITE DEPICTED IN THESE PLANS MAY BE UNDER CONSTRUCTION CONCURRENTLY WITH THE WATER AND SEWER LINES. GENERAL CONTRACTOR SHALL COORDINATE WITH NORTHHAMPTON MUD UTILITIES CONSTRUCTION CONTRACTOR REGULARLY TO ENSURE MEANS OF ACCESS TO THE SITE AND TIMING AND COORDINATION OF ALL CONNECTION POINTS BETWEEN THE TWO WORK AREAS. NOTIFY ENGINEER IMMEDIATELY OF ANY DISCREPANCIES BETWEEN THESE PLANS AND FIELD CONDITIONS.

**GOSLING ROAD NOTE:**  
 LOCATION AND DIMENSIONS OF GOSLING ROAD ARE SHOWN PER THE PLANS OF HARRIS COUNTY PROJECT NUMBER 1701050019. AT THIS TIME, GOSLING ROAD IS BEING WIDENED AND THE PROPOSED RETAIL SITE DEPICTED IN THESE PLANS MAY BE UNDER CONSTRUCTION CONCURRENTLY WITH THE WATER AND SEWER LINES. GENERAL CONTRACTOR SHALL COORDINATE WITH GOSLING ROAD CONSTRUCTION CONTRACTOR REGULARLY TO ENSURE MEANS OF ACCESS TO THE SITE AND TIMING AND COORDINATION OF ALL CONNECTION POINTS BETWEEN THE TWO WORK AREAS. NOTIFY ENGINEER IMMEDIATELY OF ANY DISCREPANCIES BETWEEN THESE PLANS AND FIELD CONDITIONS AT CONNECTION POINTS WITH GOSLING ROAD RIGHT-OF-WAY.

**SHARED DETENTION POND NOTE:**  
 DETAILS OF SHARED DETENTION POND ARE SHOWN PER THE PLANS TITLED "CONSTRUCTION OF NORTHAMPTON REGIONAL DETENTION FOR HARRIS COUNTY NORTHAMPTON MUNICIPAL UTILITY DISTRICT", HARRIS COUNTY PROJECT NUMBER 1803130006. THE PROPOSED RETAIL SITE DEPICTED IN THESE PLANS MAY BE UNDER CONSTRUCTION CONCURRENTLY WITH THE SHARED DETENTION POND. GENERAL CONTRACTOR SHALL COORDINATE WITH NORTHAMPTON MUD UTILITIES CONSTRUCTION CONTRACTOR REGULARLY TO ENSURE MEANS OF ACCESS TO THE SITE AND TIMING AND COORDINATION OF ALL CONNECTION POINTS BETWEEN THE TWO WORK AREAS. NOTIFY ENGINEER IMMEDIATELY OF ANY DISCREPANCIES BETWEEN THESE PLANS AND FIELD CONDITIONS.



KHA PROJECT 067800501  
 DATE 03/08/2019  
 SCALE AS SHOWN  
 DESIGNED BY SLH  
 DRAWN BY MTL  
 CHECKED BY SCF

REVISIONS  
 No. \_\_\_\_\_  
 BY \_\_\_\_\_  
 DATE \_\_\_\_\_

© 2017 KIMLEY-HORN AND ASSOCIATES, INC.  
 1400 WOODLICK FOREST DRIVE, SUITE 225  
 THE WOODS, TEXAS 78090-2416  
 PHONE: 281-241-3800  
 FAX: 281-241-3801  
 WWW.KIMLEY-HORN.COM

TRIAD GOSLING RETAIL  
 HARRIS COUNTY

DIMENSION CONTROL  
 PLAN

TEXAS

SHEET NUMBER  
**C4.0**