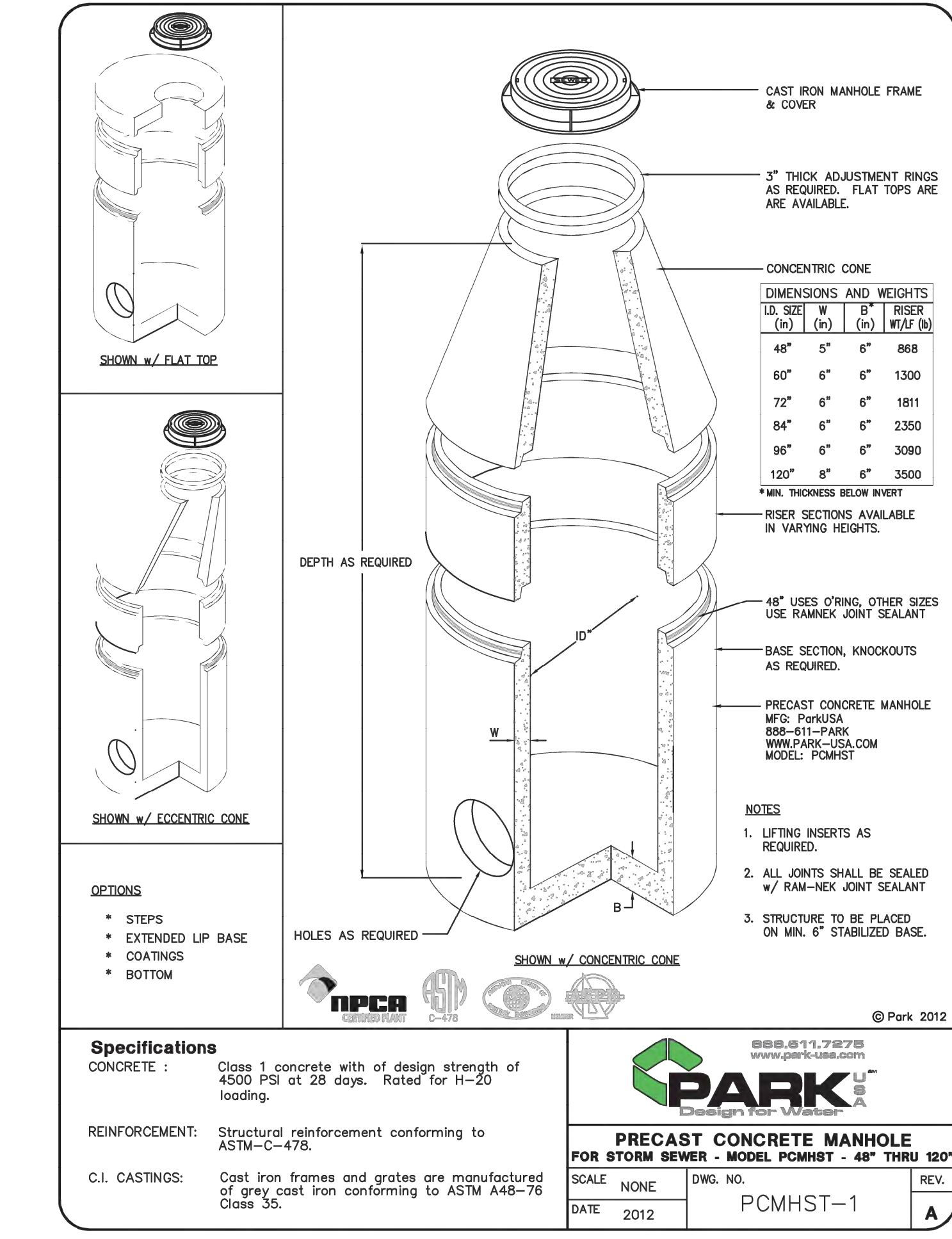
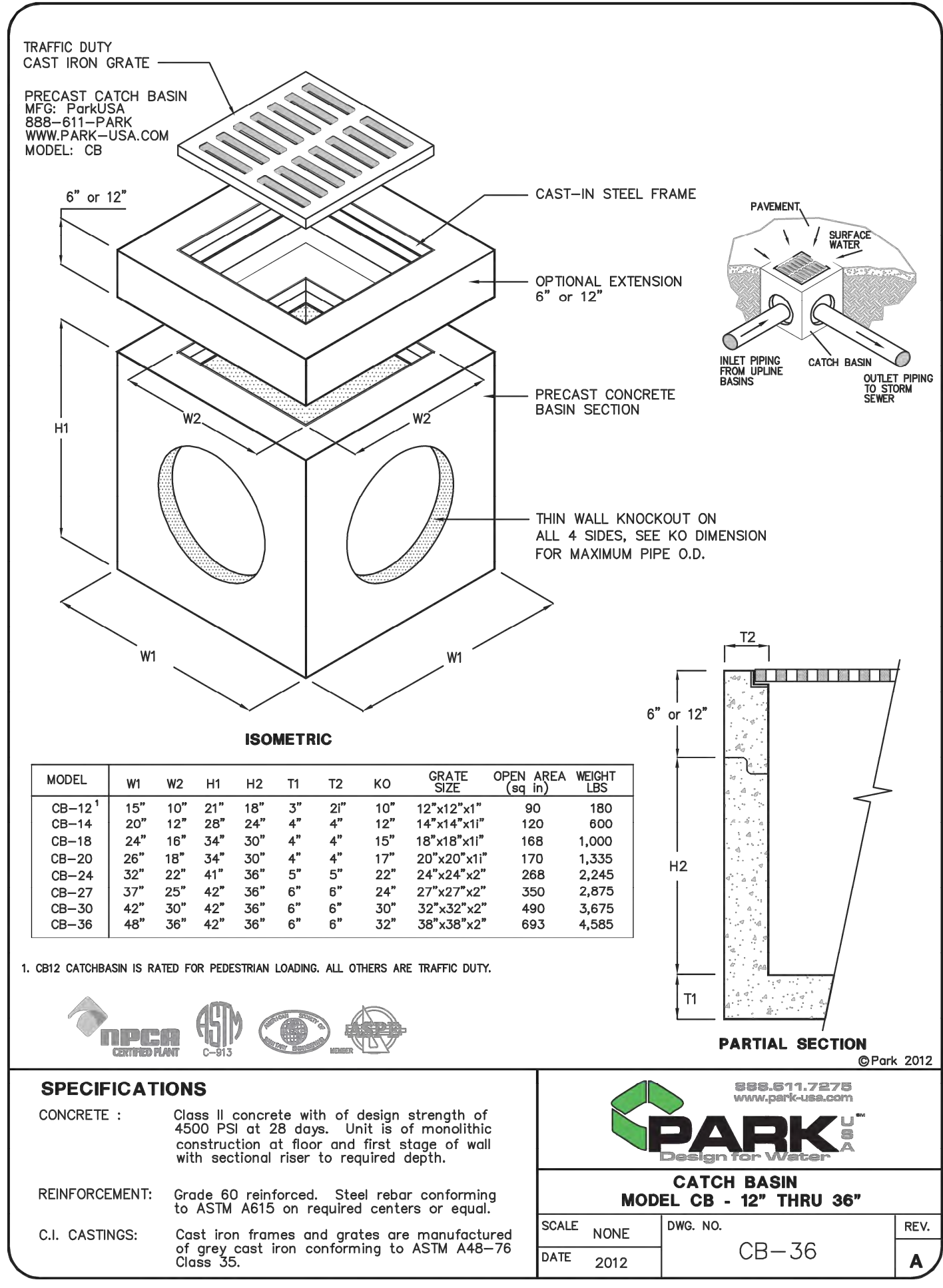
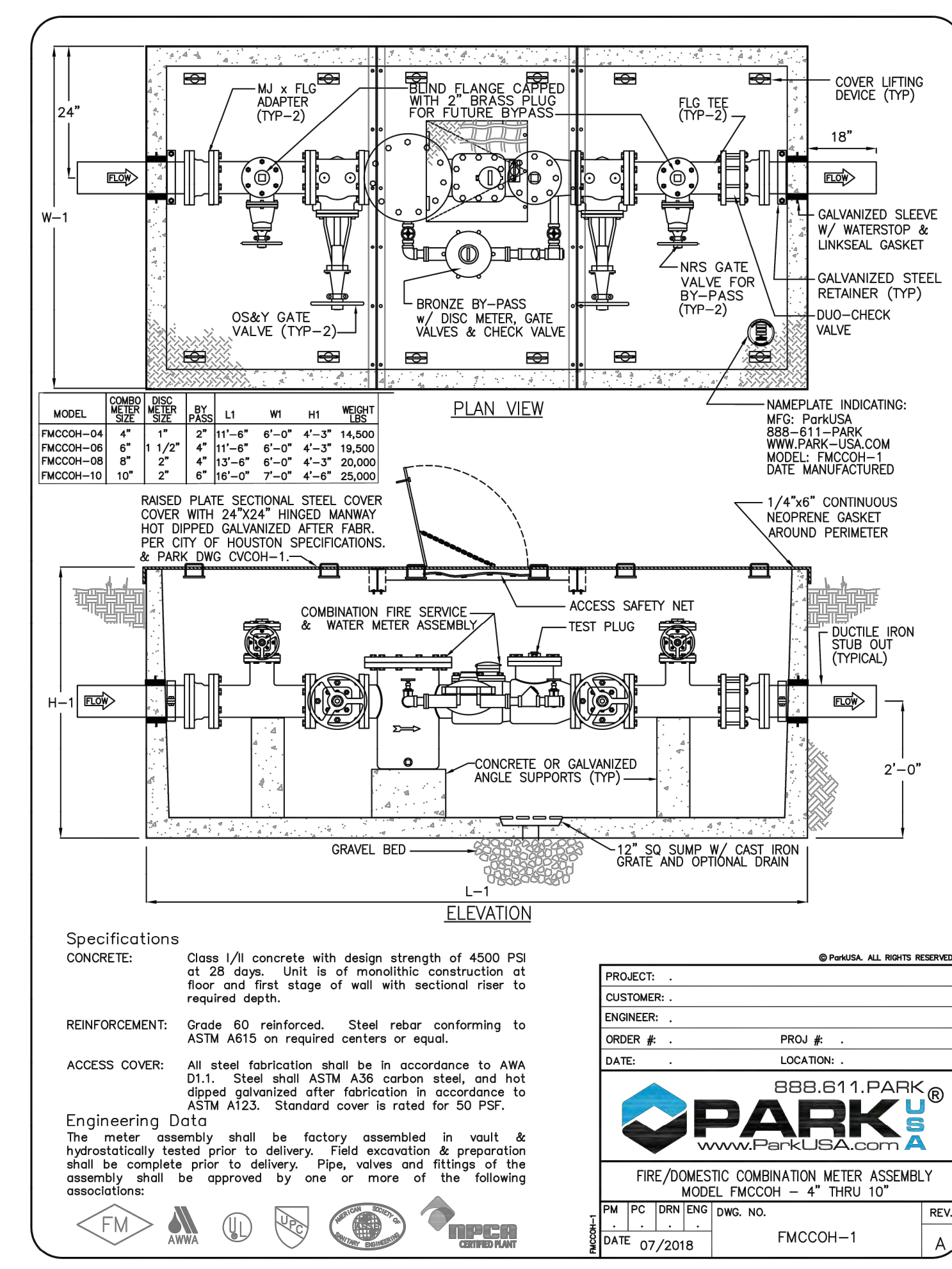
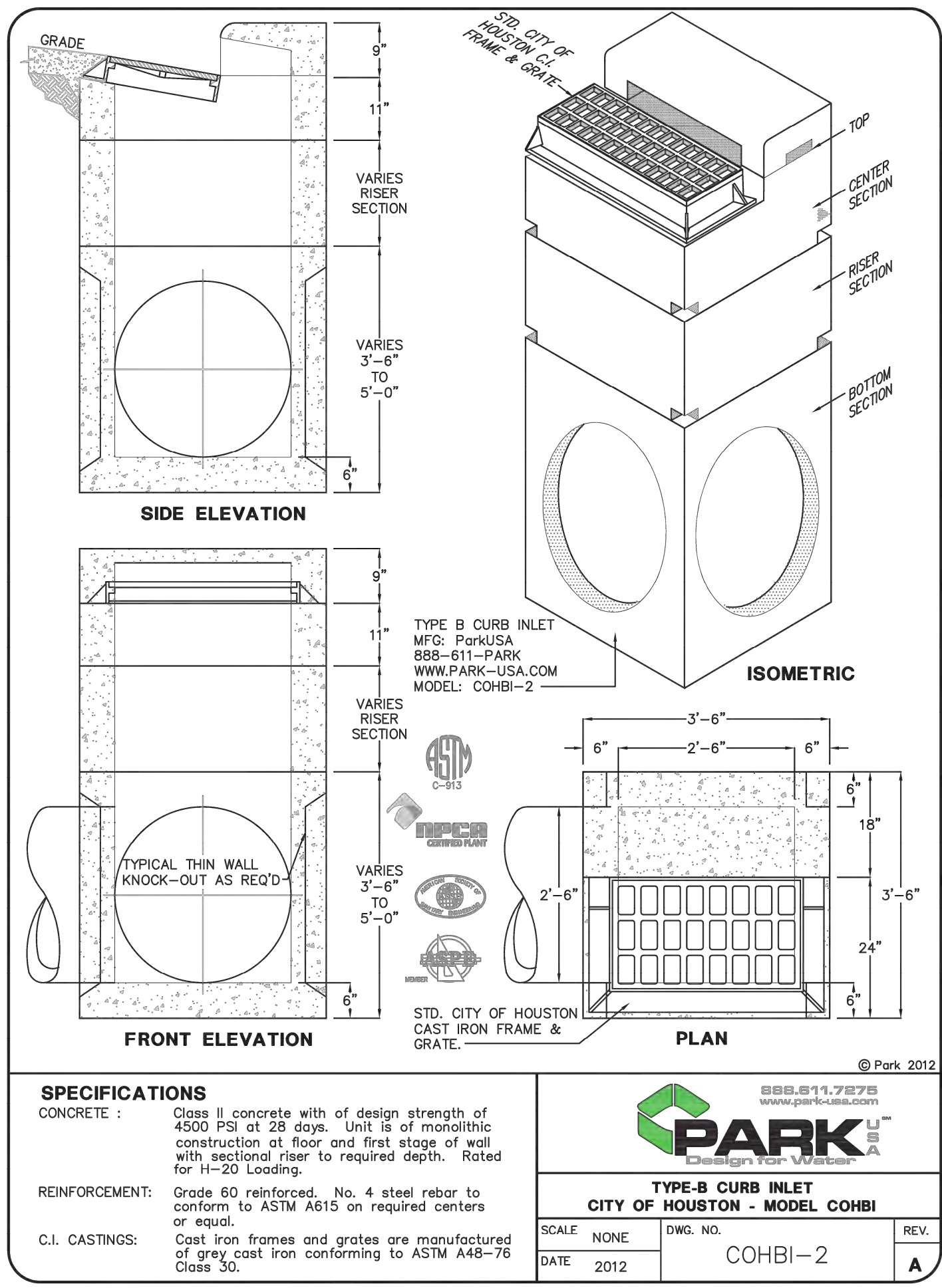
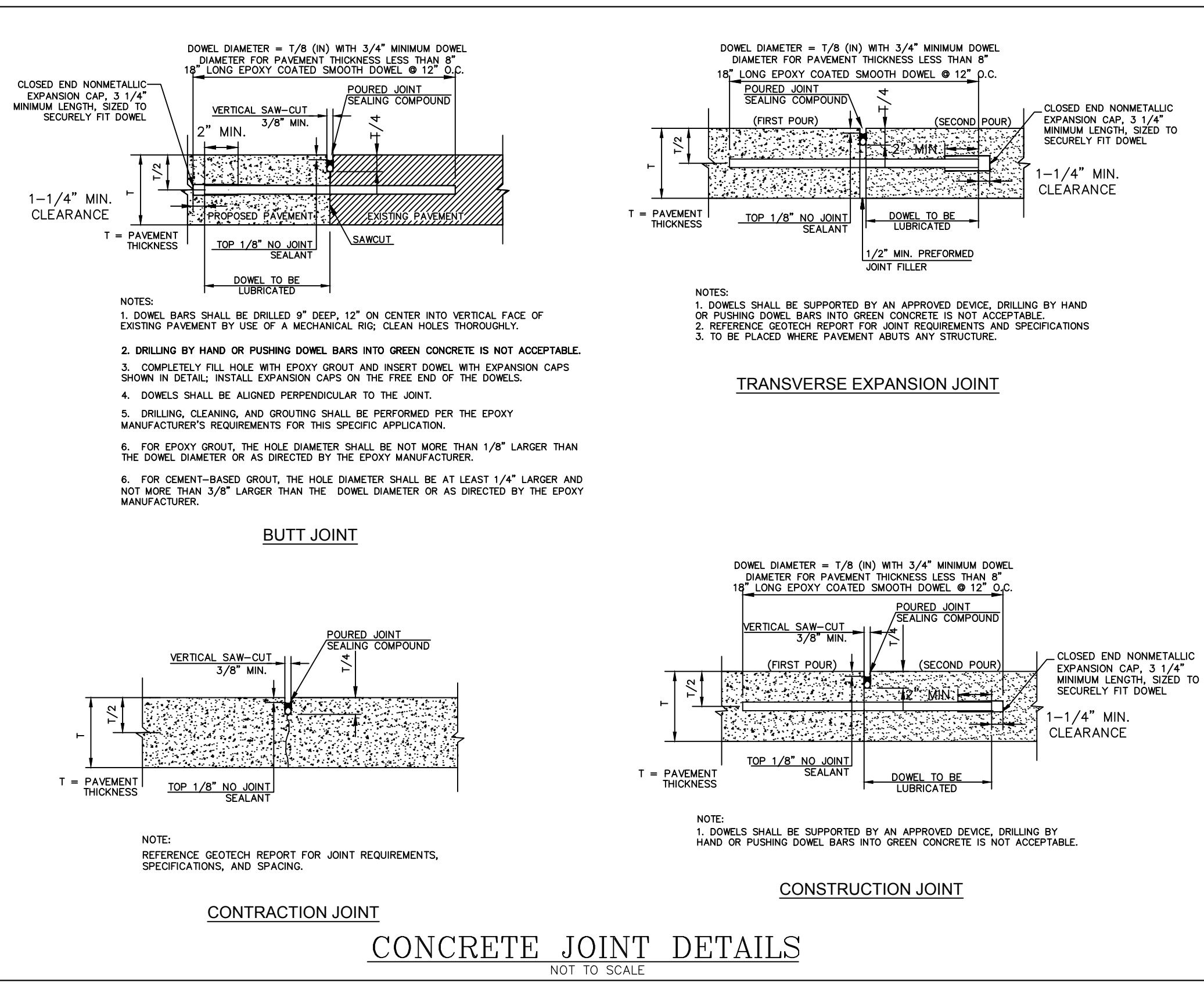
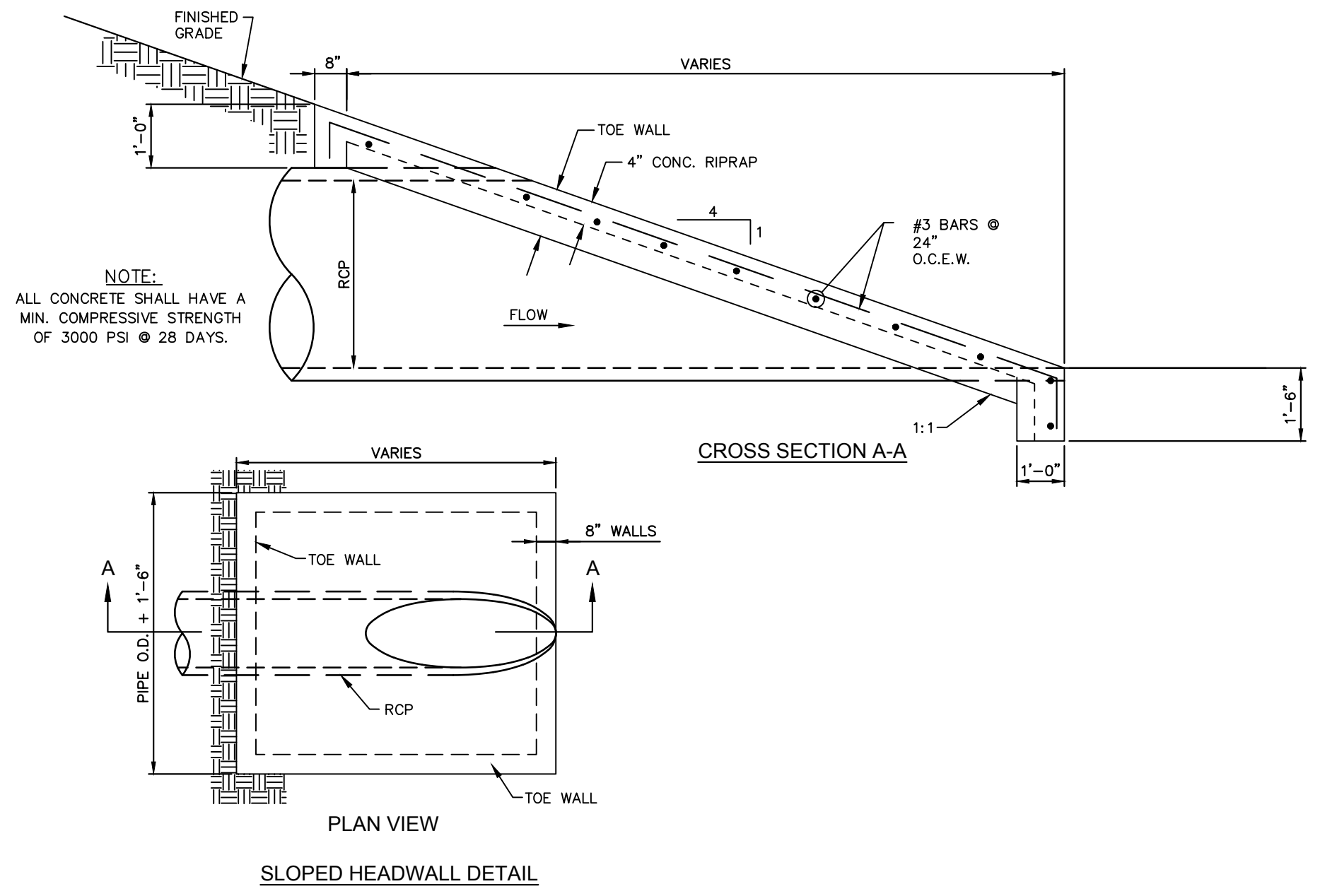
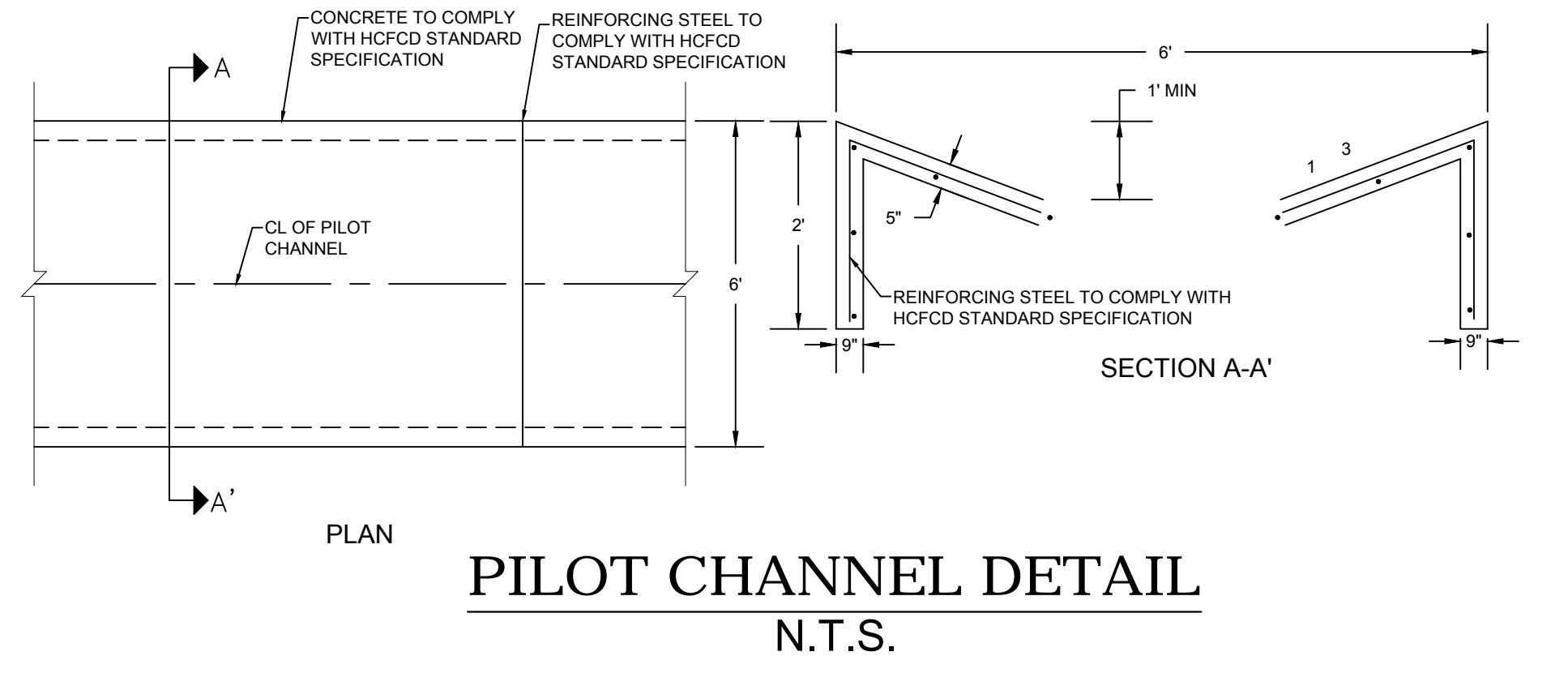


Plotted By: Lanier, Morgan - Sheet Set: R90 - Layout: C9.1 - March 05, 2019 - 02:30:15pm - K:\VDC\Draw\067800501 - Triad Gosling Retail.DWG - Plansheets\C-Detail.dwg
 This document, together with the concepts and designs presented herein, as an instrument of service, is intended only for the specific purpose and client for which it was prepared. Reuse of and improper reliance on this document without written authorization and adaptation by Kimley-Horn and Associates, Inc. shall be without liability to Kimley-Horn and Associates, Inc.



NO.	REVISIONS	DATE	BY

Kimley»Horn

© 2017 KIMLEY-HORN AND ASSOCIATES, INC.
 1400 WOODLICK FOREST DRIVE, SUITE 225
 HOUSTON, TEXAS 77057-2630
 PHONE: 281.241.2616
 FAX: 281.241.2618
 WWW.KIMLEY-HORN.COM



KHA PROJECT	067800501
DATE	03/08/2019
SCALE	AS SHOWN
DESIGNED BY	SLH
DRAWN BY	MTL
CHECKED BY	SCF

CONSTRUCTION DETAILS (2 OF 3)

TRIAD GOSLING RETAIL
 HARRIS COUNTY

C9.1

SHEET NUMBER