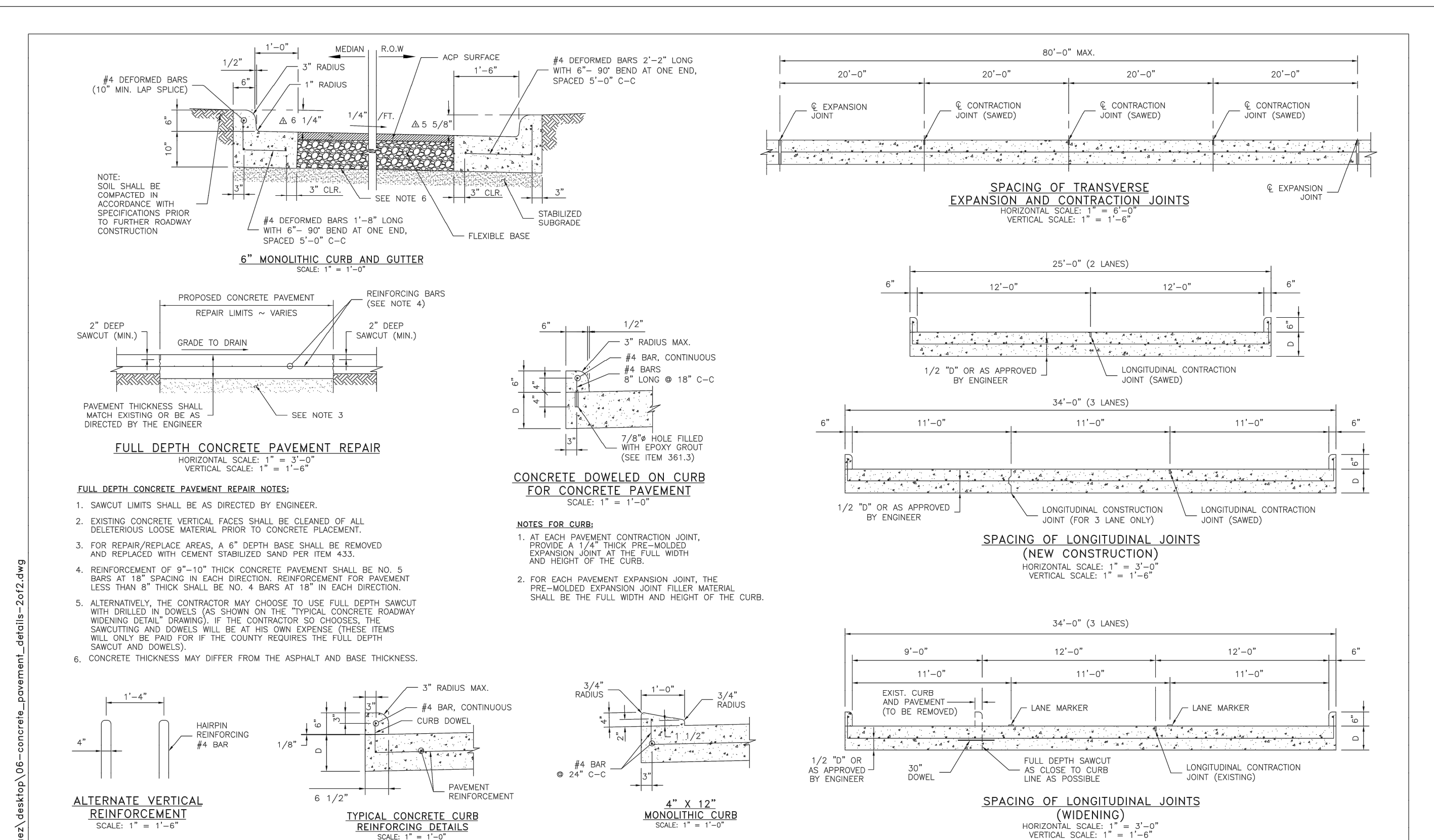
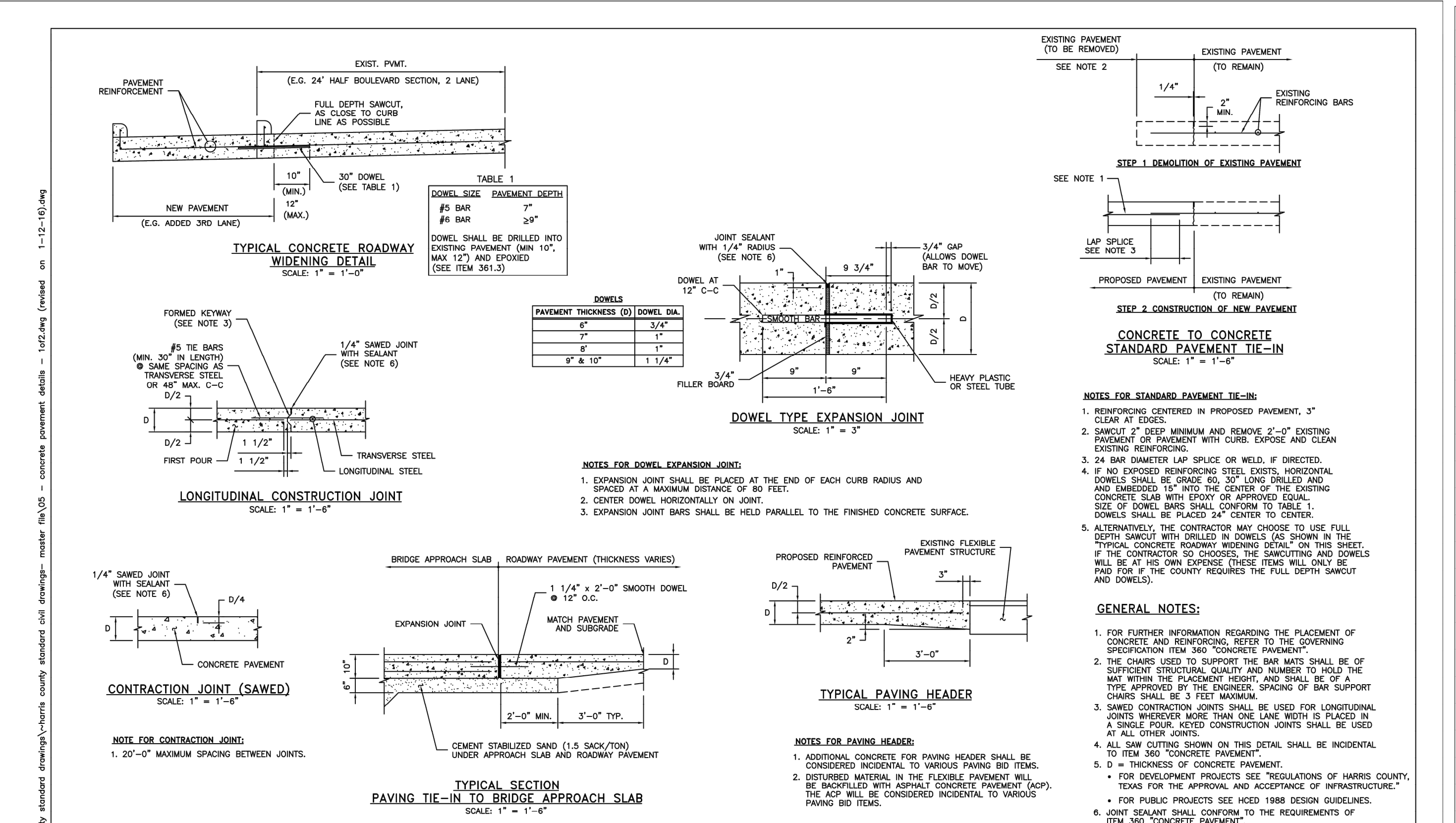
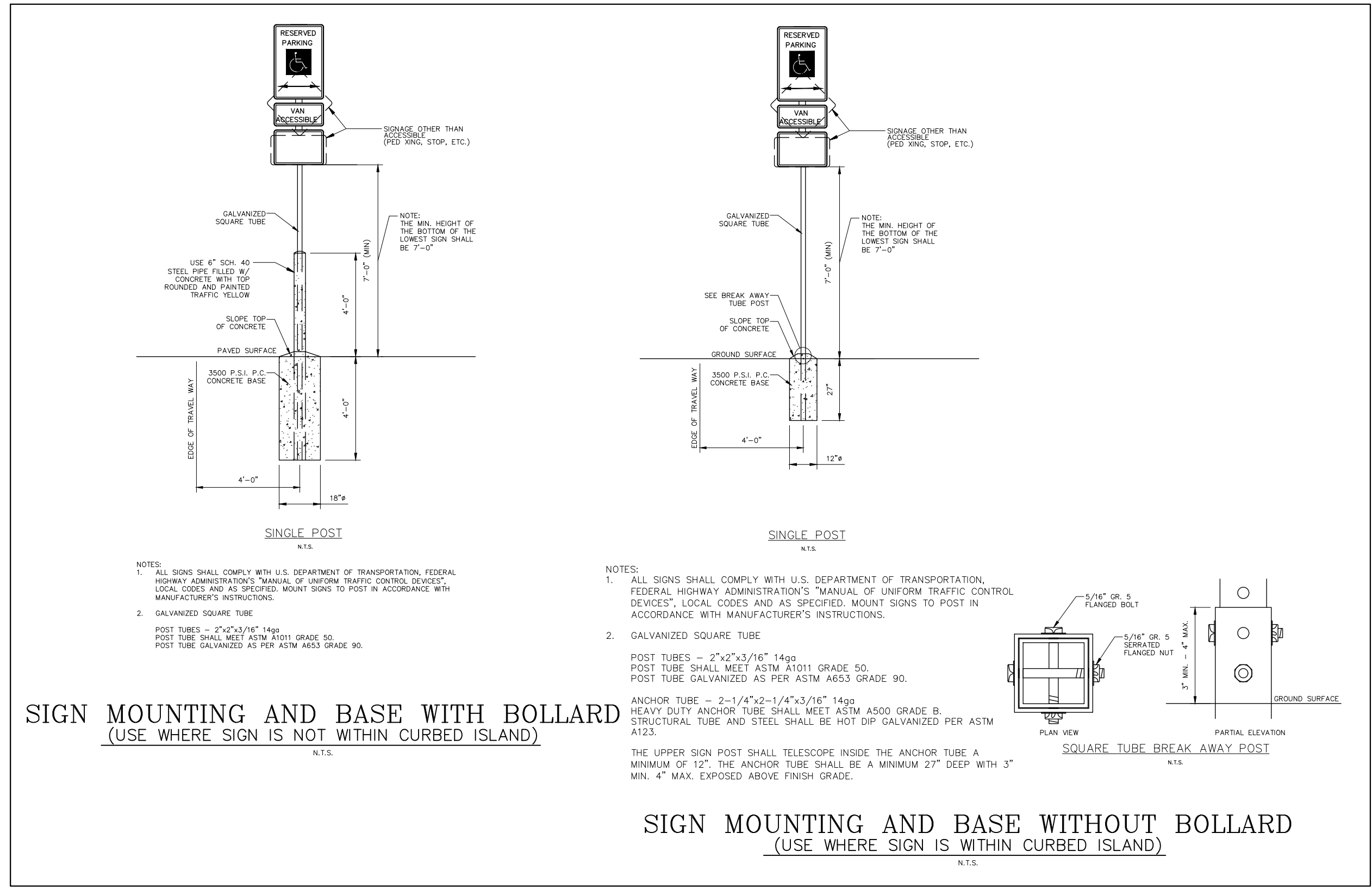
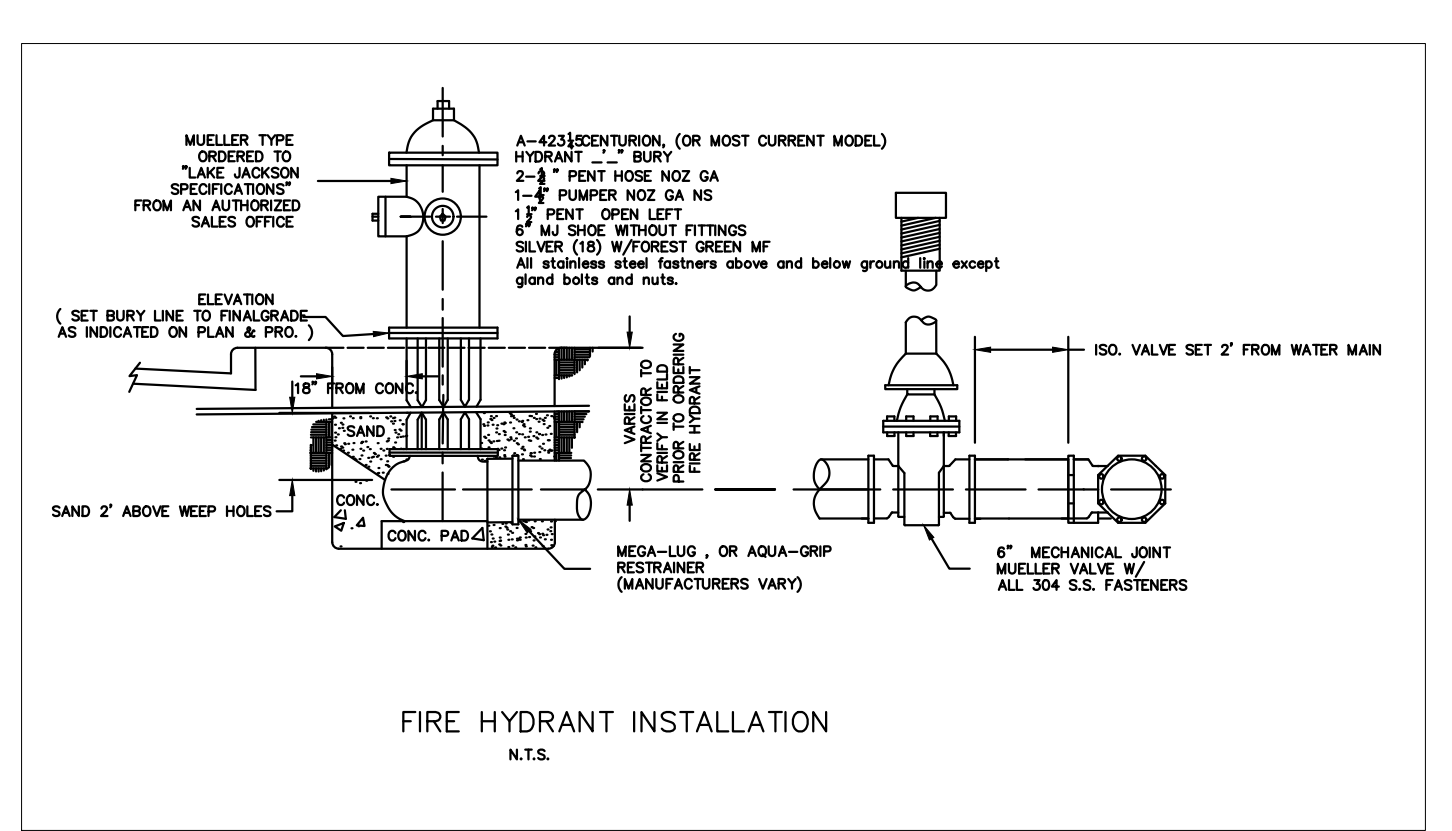
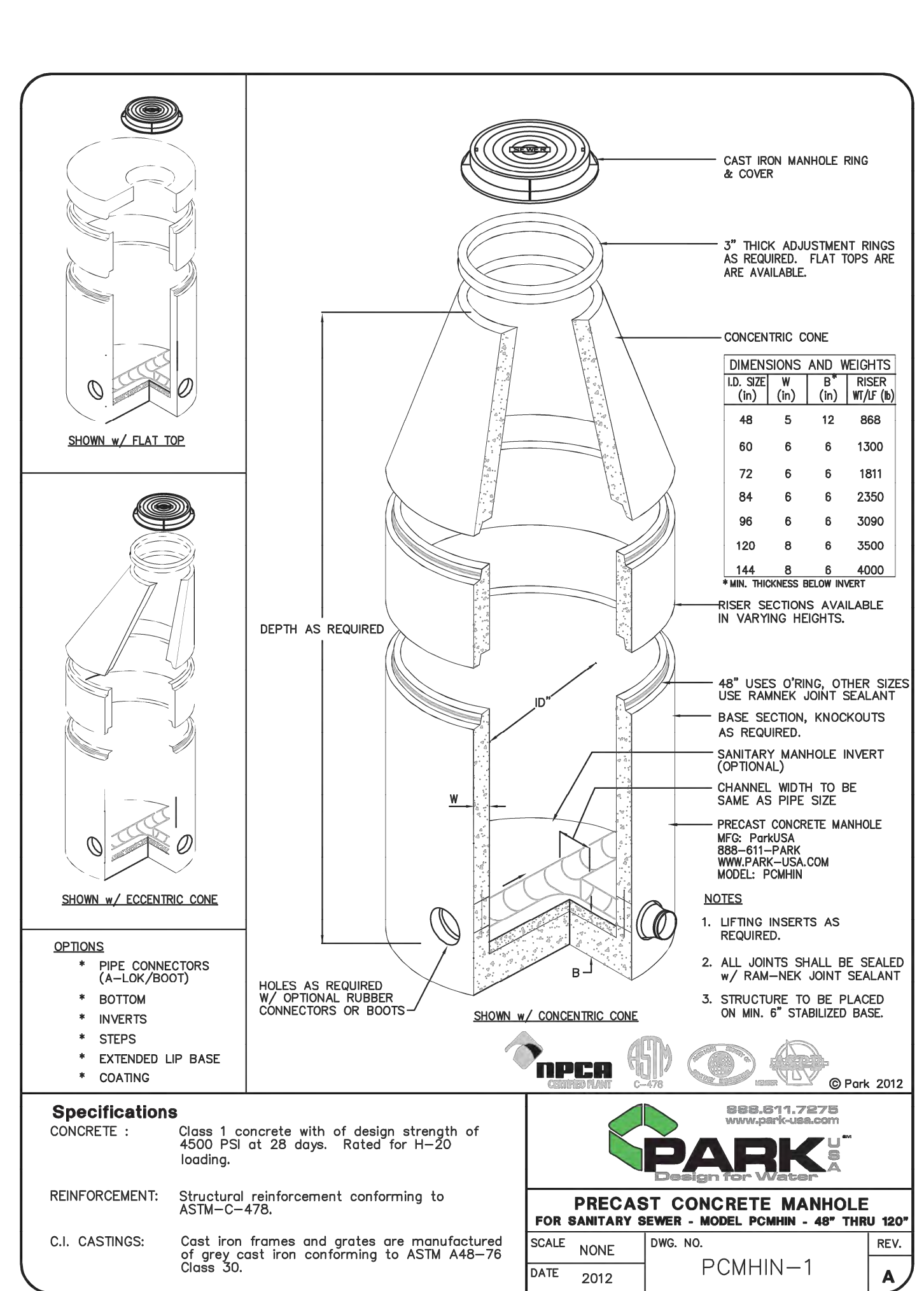
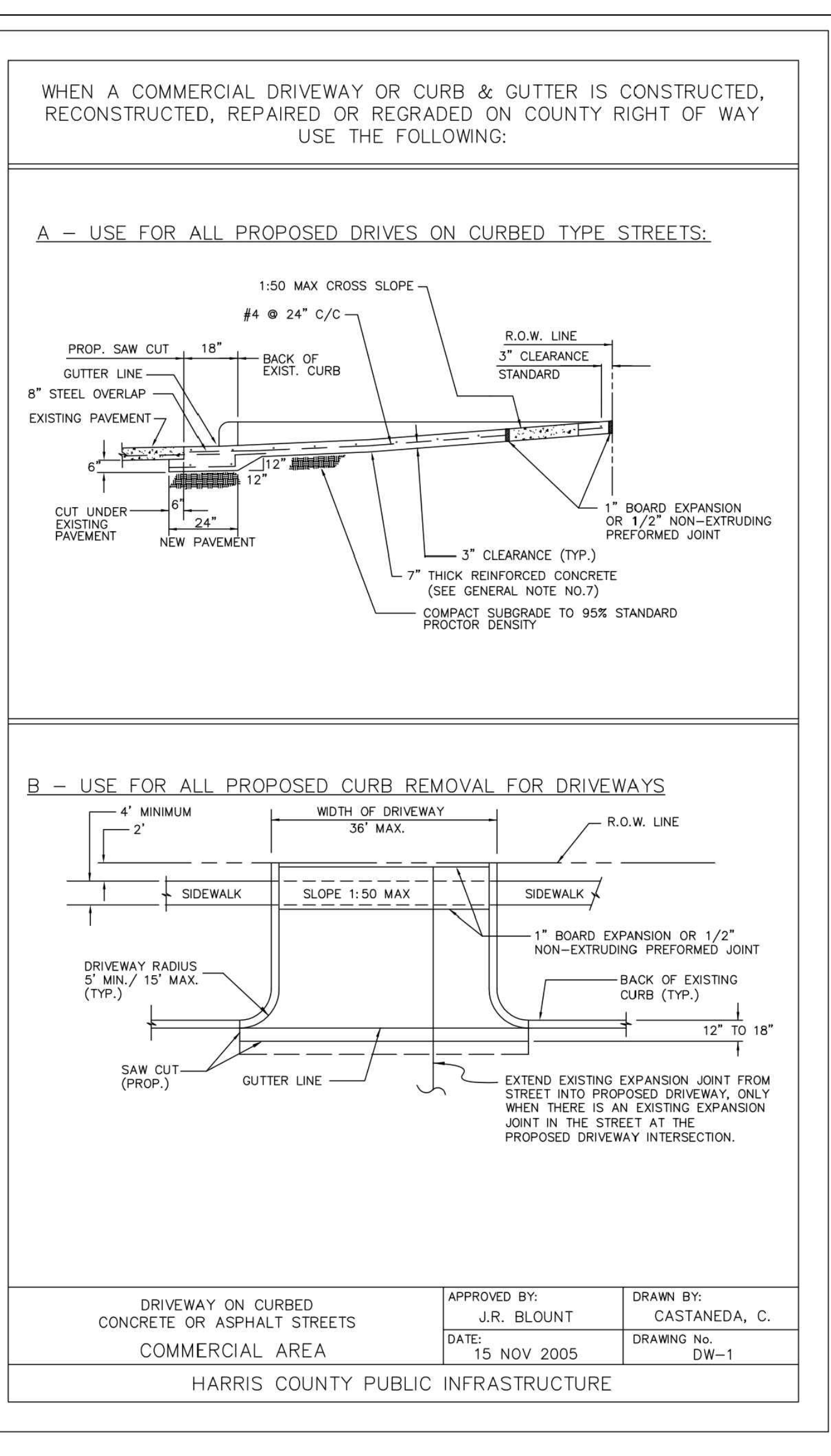


Plotted By: Lanier, Morgan, Sheet: R9.2, Date: 03/08/2019, 02:30:27pm, K:\VLD_Civil\07800501 - Triad Gosling Retail\DWG\PlanSheets\C-Details.dwg, This document, together with the concepts and designs presented herein, is intended only for the specific purpose and client for which it was prepared. Reuse of and improper reliance on this document without written authorization and adaptation by Kimley-Horn and Associates, Inc. shall be without liability to Kimley-Horn and Associates, Inc.



NO.	REVISIONS	DATE	NAME
1	UPDATED DEPARTMENT NAME	2/7/15	RS
2	CHANGE DETAIL TITLE AND NOTE 5	8/4/15	RS
3	ADD SEQUENCE ON STD PWT TIE-IN DETAIL	2/1/16	RS

HARRIS COUNTY ENGINEERING DEPARTMENT

CONSULTANT LOGO/INFORMATION

FOR INTERIM REVIEW ONLY

PROJECT TITLE: CONCRETE PAVEMENT DETAILS

SHEET NO. 1 OF 2

HARRIS COUNTY ENGINEERING DEPARTMENT

CONSULTANT LOGO/INFORMATION

FOR INTERIM REVIEW ONLY

PROJECT TITLE: CONCRETE PAVEMENT DETAILS

SHEET NO. 2 OF 2

NO.	REVISIONS	DATE	NAME
1	CORRECTED DIMENSION	12/2/14	RS
2	UPDATED DEPARTMENT NAME	2/7/15	RS
3	CHANGE NOTE 5	8/4/15	RS

NO.	REVISIONS	DATE

Kimley»Horn

© 2017 KIMLEY-HORN AND ASSOCIATES, INC.
 1400 WOODLICK FOREST DRIVE, SUITE 225
 THE WOODLANDS, TEXAS 77380
 PHONE: 281.721.2616
 TBE FIRM REGISTRATION F-928
 WWW.KIMLEY-HORN.COM

STATE OF TEXAS

STEVEN C. FREEMAN
 107308

3/8/19

RHA PROJECT	067800501	DATE	03/08/2019
SCALE	AS SHOWN	DESIGNED BY	SH
DRAWN BY	MTL	CHECKED BY	SCF

TRIAD GOSLING RETAIL CONSTRUCTION DETAILS (3 OF 3)

HARRIS COUNTY

TEXAS

SHEET NUMBER **C9.2**